



Underwater Engineering Services

AURORA CRANE

MODEL: 60KTSC25000

General Description

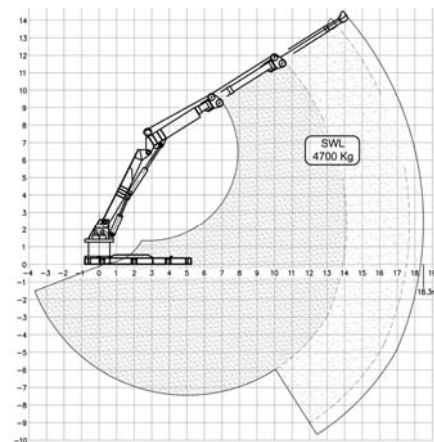
The 60KTSC25000 is a versatile telescopic knuckle boom crane specifically designed for offshore use. It is of substantial construction and has a traditional telescoping outer boom fitted with a swing jib that can be used when maximum outreach is required.

In addition to this the crane has the unique capacity to utilise a base mounted winch (approximately 11 ton capacity) to deploy loads using the inner sheave fitted to the main boom. This facility will allow the crane to be used with any deck mounted winch with virtually unlimited wire length



Technical Specification

Capacity	86 Te.m
Reach	18.3m (60ft)
Length Stowed	6.058m
Height Stowed	2.59m
Base Footprint	6.06m x 2.44m
	Std ISO 20'
Top Winch	4.7Te
Base Winch	optional
Hydraulic Power	90kW, 172 bar, 285 lpm
Slewing Angle	360°
Weight	22,000kg



Underwater Engineering Services
West Pitmillan
Foveran
Ellon
Aberdeenshire AB41 6AL

Tel: +44 (0) 1358 789 808
Fax: +44 (0) 1358 789 575
Email: info@uesltd.net
Web: www.uesltd.net