



Underwater Engineering Services

EFFER MARINE CRANE

MODEL: 44000-2S

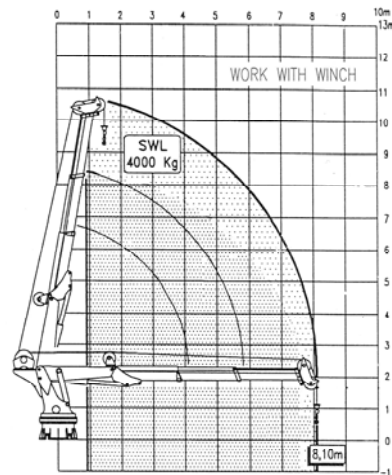
General Description

The Effer marine cranes are hydraulic lifting appliances suitable for installation on quay, on deck, on offshore platforms, driven by electro-hydraulic power units or other power source.



Technical Specification

Capacity	43.75 Te.m
Hydraulic Reach	8.10m
Length Stowed	4.113m
Height Stowed	3.5m
Base Footprint	2.4m x 2.4m
Winch	4.25Te, 4 th layer
Hydraulic Power	30kW, 290 bar max
Slewing Angle	650°
Slewing Torque	68.7kNm
Weight	6620kg



Underwater Engineering Services
West Pitmillan
Foveran
Ellon
Aberdeenshire AB41 6AL

Tel: +44 (0) 1358 789 808
Fax: +44 (0) 1358 789 575
Email: info@uesltd.net
Web: www.uesltd.net