



# Underwater Engineering Services

**PALFINGER MARINE CRANE**

**MODEL: PK.12080M**

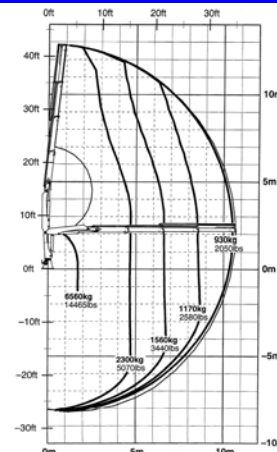
## General Description

The Palfinger marine cranes are ideal for installation on deck, on offshore vessels and platforms. Driven by an integral electro-hydraulic power unit they are ideal for vehicle / plow maintenance, survey operations and as utility deck cranes.



## Technical Specification

Capacity	11.6 Te.m
Hydraulic Reach	10.7m
Length Stowed	2.31m
Height Stowed	2.8m
Base Footprint	2.3m x 2.1m
Winch	2.5Te, 4 <sup>th</sup> layer
Hydraulic Power	18.5kW, 290 bar
Slewing Angle	370°
Weight	3150kg



**Underwater Engineering Services**  
**West Pitmillan**  
**Foveran**  
**Ellon**  
**Aberdeenshire AB41 6AL**

**Tel:** +44 (0) 1358 789 808  
**Fax:** +44 (0) 1358 789 575  
**Email:** [info@uesltd.net](mailto:info@uesltd.net)  
**Web:** [www.uesltd.net](http://www.uesltd.net)