



Underwater Engineering Services

ROV TOOLING MANIFOLD BLOCK

MODEL: P015

General Description

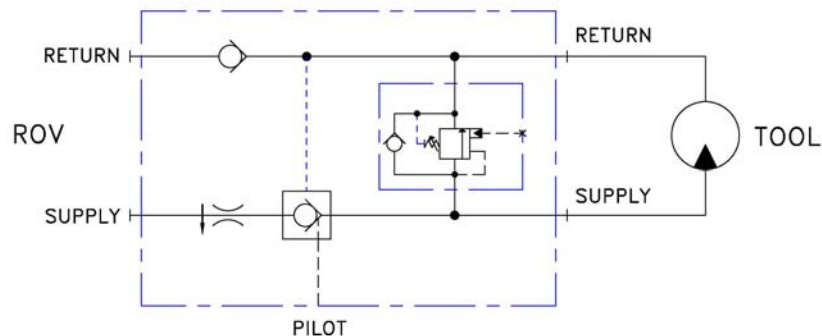
The P015 ROV Tooling Manifold Block is suitable for use with subsea hydraulic tools being powered and controlled from a ROV.

The Manifold Block offers On/Off control, flow and pressure protection for the tooling as well as a run down check valve.

Also included is a safety check valve to prevent damage to tool if incorrectly connected to ROV

Technical Specification

Max Pressure	210 bar
Max Flow	45 lpm
Standard Flow	35 lpm
Main Ports	3/8" BSP
Pilot	1/4" BSP
Mounting	3x M6 clearance holes
Dimensions	148 x 125 x 57mm
Weight	2 kg



Underwater Engineering Services
West Pitmillan
Foveran
Ellon
Aberdeenshire AB41 6AL

Tel: +44 (0) 1358 789 808
Fax: +44 (0) 1358 789 575
Email: info@uesltd.net
Web: www.uesltd.net